

Rumidifier Personal Humidifier RD 60

Instruction Manual

Thank you for choosing the world's No.1 aromatherapy humidifier – Rumidifier. To help you better explore the full performance of our product please read this manual carefully before use.

Characteristics:

1. Rumidifier works as both air humidifier and aroma diffuser. The fine mist sent out by Rumidifier can remove the static electricity, reduce the radiation generated by electronic components and decrease the formaldehyde contamination, or that of dust and of other harmful gas. This, to some extent, may help to protect our eyes and skin. The pleasant smell will help to lift your mood, relieve tension and anxiety, boost the metabolism and so on.
2. With an angle adjustable bracket, Rumidifier is suitable for cigarette lighter in different locations of the vehicle. The USB socket charger can be an external power supply for mobile phone and other electronic products. USB port can also be used to power Rumidifier from any other USB power source such as computers.

Specifications

Input Voltage: DC 12V
Output Voltage: Spray DC12V
Power: Spray 1.5W-3.5W
USB socket: DC5V2.1A
Water tank capacity: 50ML
Spray amount: 20-30ML/hour
Dimension: 68MM×70MM×210MM (LWH)

Contents in the Package

- 1 Humidifier
- 1 Sponge (spare part)
- 1 User Manual

Operations:

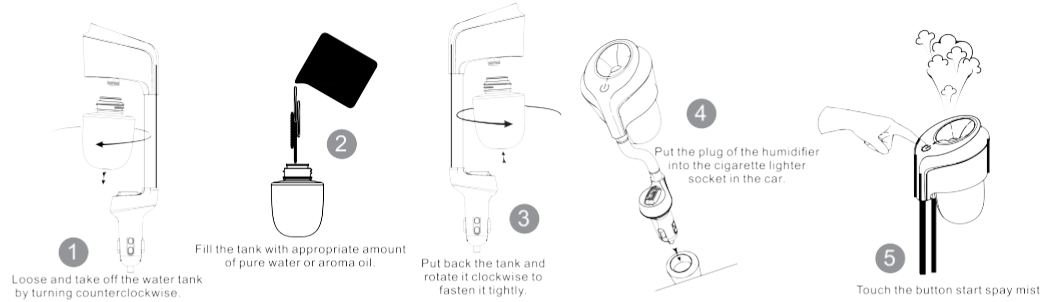
1. Loose and take off the water tank by turning counterclockwise. Fill the tank with appropriate amount of pure water or aroma oil. Put back the tank and rotate it clockwise to fasten it tightly.
2. Put the plug of the humidifier into the cigarette lighter socket in the car. When the indicator flashes red, Rumidifier comes into Standby mode.
3. Touch the button once. The indicator will flash blue and Rumidifier enters in Humidification mode.
4. Touch the button again. The indicator will flash both red and blue, and Rumidifier enters in Aroma Diffusion mode. (It is necessary to add 2 to 3 drops of aroma essence when you use this function.)
5. Touch the button for the third time. The indicator will flash red again and Rumidifier will be shut down.

Caution:

1. The product is protected by the auto power-off function. After continuously working for 2 hours, Rumidifier will cut off the power automatically. To use the humidifier again, please turn on after adding more water.
2. Purified water is recommended. When the mist becomes thinner, please replace the sponge. Use regularly a fully water absorbed cotton swab (may add some proper white vinegar in the water), vertically press on the spray nozzle and spin forth and back for 5-10 times.
3. Water soluble essential oils are preferable. Please DO NOT use greasy aroma oils.

Attentions:

1. This product can be used only when the car engine is started.
2. Please DO NOT use humidification function when there is not enough water in the tank.
3. Operating Temperature: 0-45°C
4. Keep out of reach of children.
5. When the product is not being used, please detach it, pour out all the liquid and store it in a cool, dry place.



RD 60

